



深圳德彩光电有限公司
Shenzhen Dicolor Optoelectronics Co.,Ltd

LED模组规格书

LED MODULE SPECIFICATION

编号 (NO.):	DI-P6F1
类型 (Type):	Indoor LED Module
间距 (Pitch):	6 mm
驱动 (Driving):	1/8 Duty
版本 (Version):	1.0



请避免重物挤压灯面!



小心静电损坏LED!



非专业人员请勿维修!

地址:深圳市宝安区福永镇福海大道福海科技工业园 B3区2栋2楼

Address:Floor 4,Seat 2,B3 District,FuHai Technology Industry Park,Fuyong
Town,Shenzhen,China

电话(Tel):0086-755-29604770/29604771/29604749 传真(Fax):0086-755-29604042

网址(Web):[Http://www.dicolor.cn](http://www.dicolor.cn)

邮编(Post code):518103



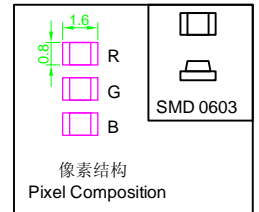
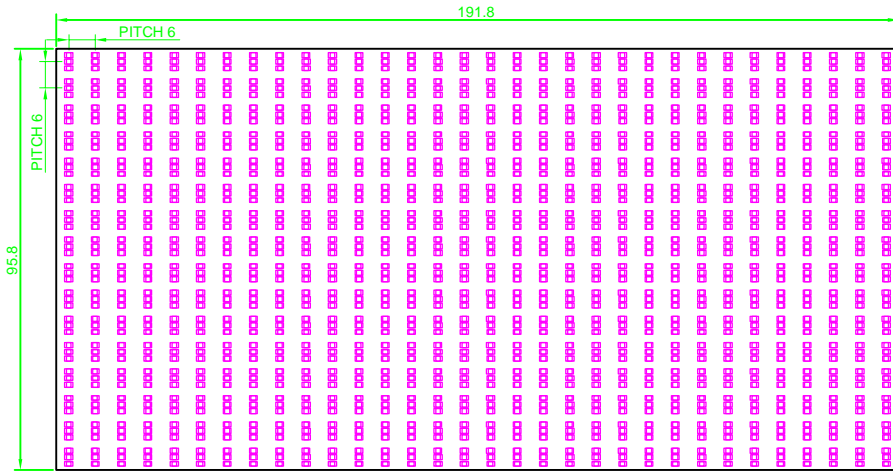
深圳德彩光电有限公司

Shenzhen Dicolor Optoelectronics Co.,Ltd

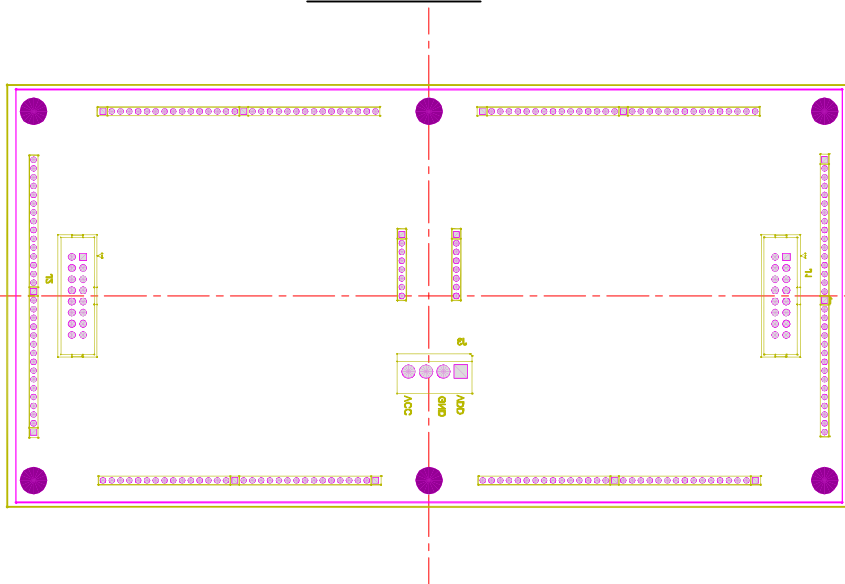
DI-P6F1

户内模组 (INDOOR MODULE)

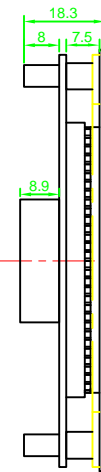
单位 / Unit : mm



FRONT VIEW



BACK VIEW



SIDE VIEW

Pin Assignment (Data J1/J2 - F.C.16)

Pin NO.	Function	Pin NO.	Function
1	R0	2	G0
3	B0	4	GND
5	R1	6	G1
7	B1	8	A
9	B	10	C
11	CLK	12	GND
13	LAT	14	GND
15	OE	16	GND

Pin Assignment (Power J3 - CH5)

Pin NO.	Function
1	VDD
2	GND
3	GND
4	VCC



深圳德彩光电有限公司

Shenzhen Dicolor Optoelectronics Co.,Ltd

DI-P6F1

户内模组 (INDOOR MODULE)

主要技术指标

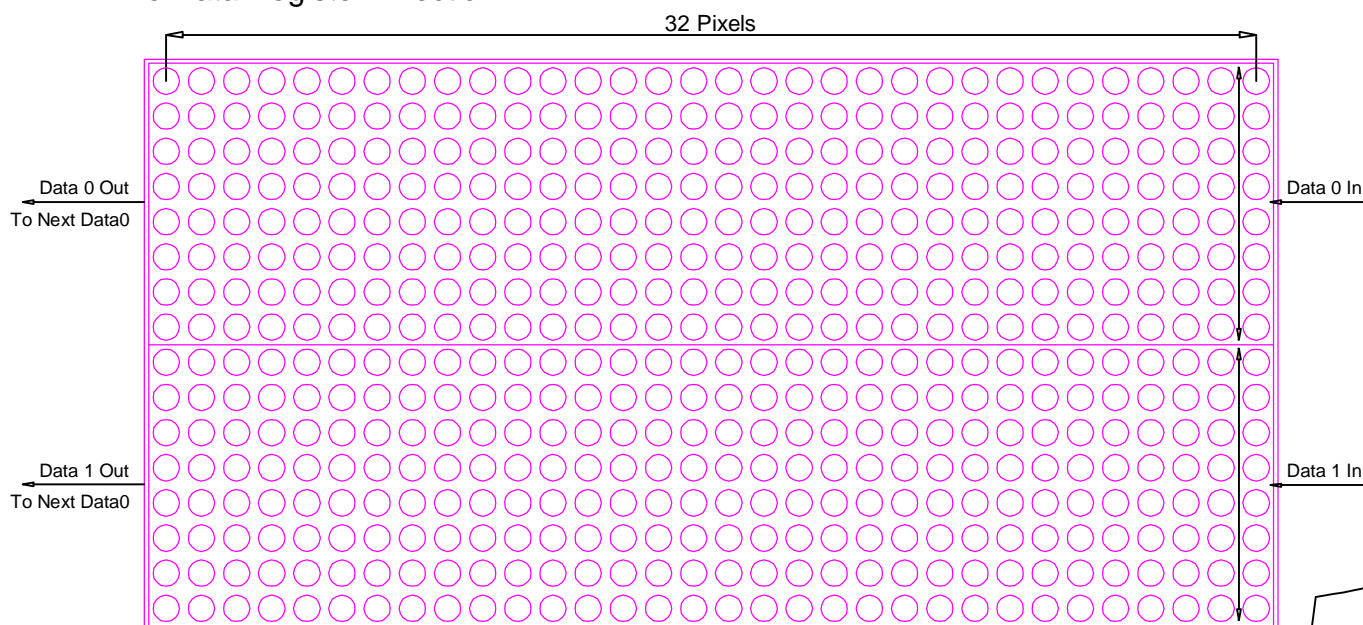
MAIN SPECIFICATIONS

(温度条件 Ta = 25°C)

项目 (ITEM)	参数 DESCRIPTION
像素间距 (Pixel Pitch)	Pitch 6 mm
显示分辨率 (Display resolution)	32 x 16 Dots
像素基色 (Pixel configuration)	1 R, 1 G, 1 B
物理密度 (Physical density)	27222 (pixels / m ²)
驱动方式 (Driving Method)	1/8 Duty
外形尺寸 (Panel size)	191.8x95.8mm
灰度等级 (Gray scale)	256 greys for each colour (16,7 77,216 grade) 每种颜色,256级;共16,777,216级
显示亮度 (Brightness)	1300 ± 10% Nit
模组视角 (Viewing angle)	H:160° / V:120°
最佳视距 (Option distance)	> 6 M
LED封装 (LED Encapsulation)	SMD0603
LED波长 (LED Wavelength)	R:620~635nm G:515~530nm B:460~475nm
工作电压 (Working Voltage)	DC 5 V
使用功耗 (Working Consumption)	32 W
使用寿命 (Life Time)	100,000 Hours
环境温度 (Environment Temperature)	-20°C ~ 60°C

数据传输原理图

Drive Data Register Direction



FRONT VIEW (LAMP VIEW)